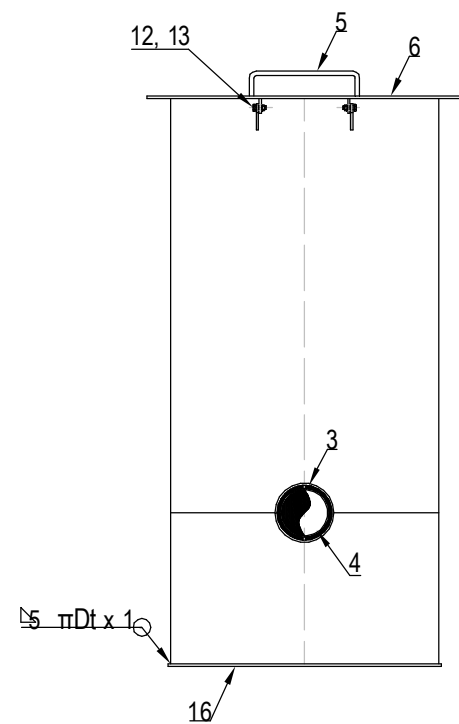
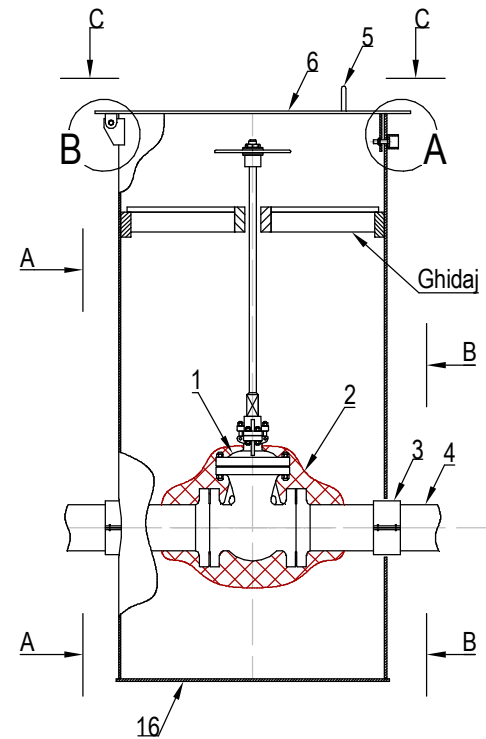


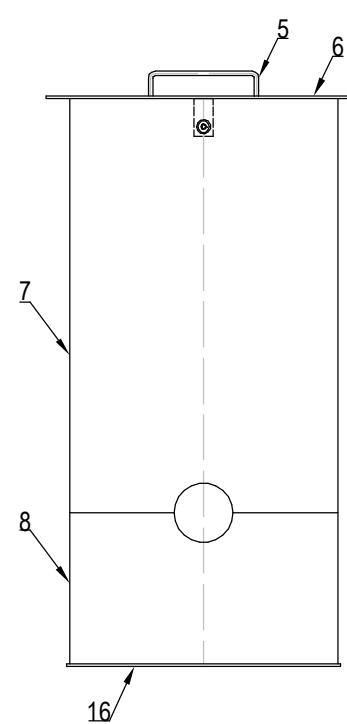
Vedere A - A



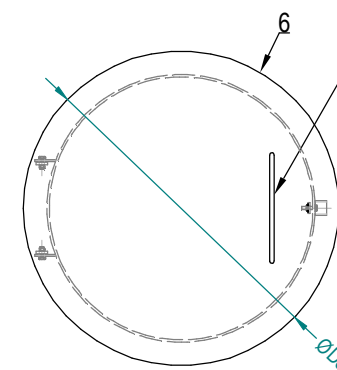
Detaliu izolare ventil si montaj tub protector



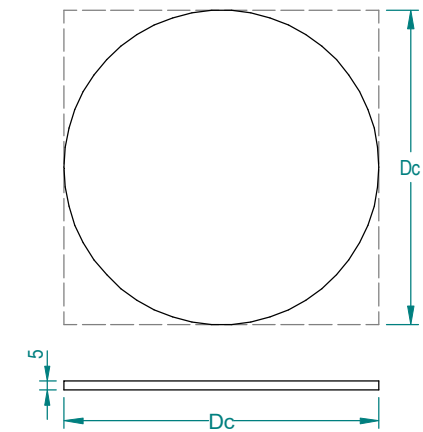
Vedere B - B



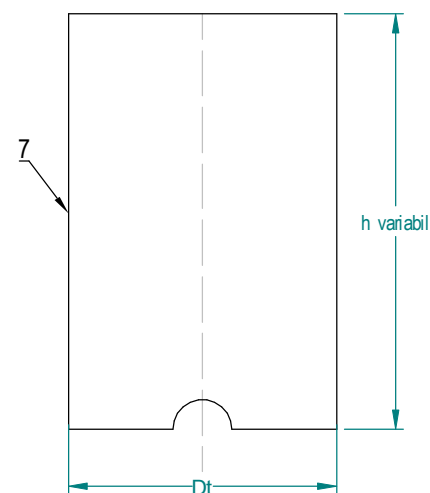
Vedere in plan C - C



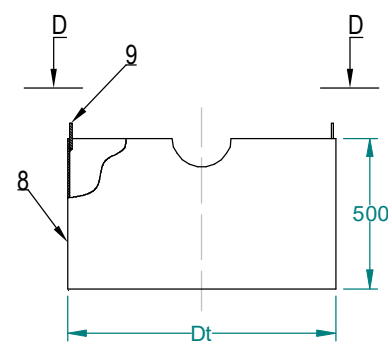
Detaliu "6"



Detaliu tub superior "7"

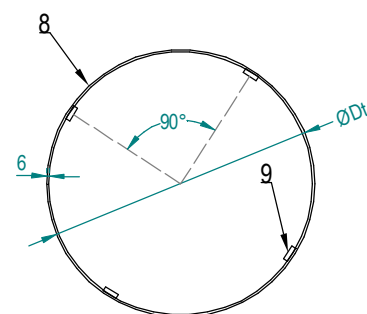


Detaliu tub inferior "8"

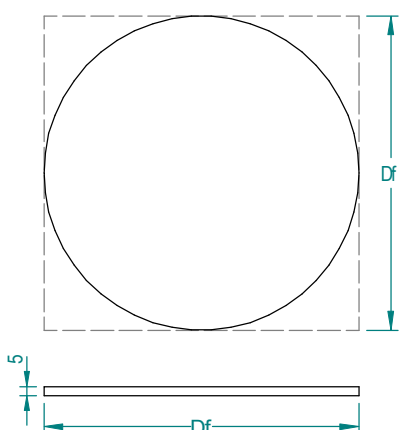


| Dimensiuni tub protector |     |                  |     |     |
|--------------------------|-----|------------------|-----|-----|
| DN ventil                | Dt  | Grosime tub [mm] | Dc  | Df  |
| 200                      | 813 | 7.1              | 885 | 885 |

Vedere D - D



Detaliu "16"



NOTA:

Protecția anticorozivă a caminului se va face prin vopsire conform SR EN ISO 12944:2002

- doua straturi grund epoxidic cu Zn, cu grosime totala strat uscat 75 - 80 μm;
- vopsea epoxidica clorcauciuc in doua straturi.

| Poz. | Denumire               | Dimensiuni           | STAS                | Material    | Cantitati |
|------|------------------------|----------------------|---------------------|-------------|-----------|
| 1    | Robinet cu sertar pana | DN 200               |                     | A216 + 13Cr |           |
| 2    | Mastic izolator        |                      | KEBU PLAST MASTIC   |             |           |
| 3    | Inel distantier        |                      |                     | MDPE        | 2         |
| 4    | Teava                  |                      | SR EN ISO 3183/2013 | L 360N      |           |
| 5    | Maner                  | Ø12 x 400mm          | SR EN 10060:2004    | OL 37.2K    | 1         |
| 6    | Capac                  | Tb. 5mm              | SR EN 10029:2011    | OL 37.2K    | 1         |
| 7    | Manta camin superioara | ØDt x 7.1            | SR EN ISO 3183/2013 | L 245       |           |
| 8    | Manta camin inferioara | ØDt x 7.1 x 500mm    | SR EN ISO 3183/2013 | L 245       |           |
| 9    | Plattanda ghidare tub  | 100 x 40 x 5mm       | SR EN 10058:2004    | OL 37.2K    | 4         |
| 10   | Protector surub        | Ø1 1/2" x 3.6 x 30mm | STAS 8185:88        | OLT 45      | 1         |
| 11   | Tabla groasa           | 100 x 50 x 6mm       | SR EN 10058:2004    | OL 37.2K    | 1         |
| 12   | Surub                  | M10 x 50             | SR EN ISO 4018:2011 |             | 3         |
| 13   | Piulita                | M10                  | SR EN ISO 4034:2013 |             | 3         |
| 14   | Tabla groasa           | 70 x 55 x 6mm        | SR EN 10058:2004    | OL 37.2K    | 2         |
| 15   | Tabla groasa           | 40 x 30 x 6mm        | SR EN 10058:2004    | OL 37.2K    | 2         |
| 16   | Fund camin             | Tb. 5mm              | SR EN 10029:2011    | OL 37.2K    | 1         |

GREUTATE CAMIN IN FUNCTIE DE INALTIME

| Greutate capac camin [Kg] | 30.74  | 30.74  | 30.74  | 30.74  | 30.74  | 30.74  | 30.74  | 30.74  | 30.74  | 30.74  |
|---------------------------|--------|--------|--------|--------|--------|--------|--------|--------|--------|--------|
| Greutate fund camin [Kg]  | 30.74  | 30.74  | 30.74  | 30.74  | 30.74  | 30.74  | 30.74  | 30.74  | 30.74  | 30.74  |
| Greutate tub pe ml [Kg]   | 141    | 141.00 | 141.00 | 141.00 | 141.00 | 141.00 | 141.00 | 141.00 | 141.00 | 141.00 |
| H [m]                     | 1.50   | 2.00   | 2.50   | 3.00   | 3.50   | 4.00   | 4.50   | 5.00   | 5.50   | 6.00   |
| Greutate [Kg]             | 283.98 | 354.48 | 424.98 | 495.48 | 565.98 | 636.48 | 706.98 | 777.48 | 847.98 | 918.48 |

Verificator/  
Expert

Nume

Semnatura

Cerinta

Referat / Expertiza Nr. / Data

S.C. SNIF PROIECT S.A. Targoviste  
Numar de inmatriculare J15/925/2005

Beneficiar:

CONPET S.A. PLOIESTI

Pr. nr.

368/2018

Specificatie

Nume

Semnatura

Scara:

„Înlocuirea unui tronson din conducta de țiglei Ø8 5/8" Lucăcești - Vermest, pe tronsonul Stația Lucăcești - deal Măgura în lungime de cca. 2 km + racordul către rampa de încărcare țiglei Moinești de 6" în lungime de 700m"

Faza

PT+CS+DE

Desenat

Ing. Radu Florin

Data:

2019

Detaliu izolare ventil si montaj tub protector

Pl. nr.

32